



Metal that works

Industrial shelving solutions since 1954

2020 Installation Guide Integrated Modular Drawer

Strength • Support • Integrity

**A minimum of two people is recommended to carry out the assembly*



METALWARE

NOTICE

Use caution when handling and assembling metal parts. The metal may have sharp edges or corners. The use of protective gloves is recommended. Do not use this unit for anything that is outside the designed function of storage. Do not store loose or heavy items on the top shelves or on the top of the unit, for they create a falling hazard that can injure yourself or others. Always remember to use proper lifting techniques when moving either the boxed or assembled drawer unit. Shelving should be periodically inspected for loose bolts, for damaged “T” uprights or shelves, for proper seating of shelf and clip. Integrity of drawer components and functionality should also be periodically inspected. Check loading to assure it is not being overloaded. If any damage is detected, units should be unloaded immediately and repaired or replaced before returning to service.



Table of Contents

Recommended Tools for Assembly	4
How to Assemble a Standard Integrated Modular Drawer Unit	5
Sub-Assembly Component Reference Guide	10
Fig. 1. Sample drawer (Empty box).....	10
Fig. 2. Sample drawer (44 compartments).....	10
Fig. 3. Sample Drawer (16 compartments)	11
Fig. 4. Interlok Drawer Adaptor Kit.....	11
Fig. 5. Separator	12
Fig. 6. Divider	12



Recommended Tools for Assembly

Below is a list of recommended tools to assemble a standard Integrated Modular Drawer Unit

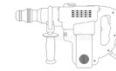
- 1 Pliers to position the brackets on the end of the back braces



- 2 $\frac{7}{16}$ " key and socket wrench to secure the metal shelves together



- 3 Hammer drill with $\frac{3}{8}$ " cement drill bit for anchoring the drawer unit to the floor



- 4 Rubber mallet



- 5 A level, 36" wide minimum



- 6 Work gloves



- 7 Safety glasses



- 8 Mask for protection





How to Assemble a Standard Integrated Modular Drawer Unit Compatible with Interlok & E-Series Widespan Shelving Systems

- The shelving unit must be assembled and anchored to the floor using footplates prior to inserting the drawers
- All hardware mentioned is required and should be included with your order
- Metalware provides $\frac{3}{8}$ " x 3" anchors for each post to be anchored onto a structurally sound cement floor
- ***It is recommended that two people carry out the assembly**

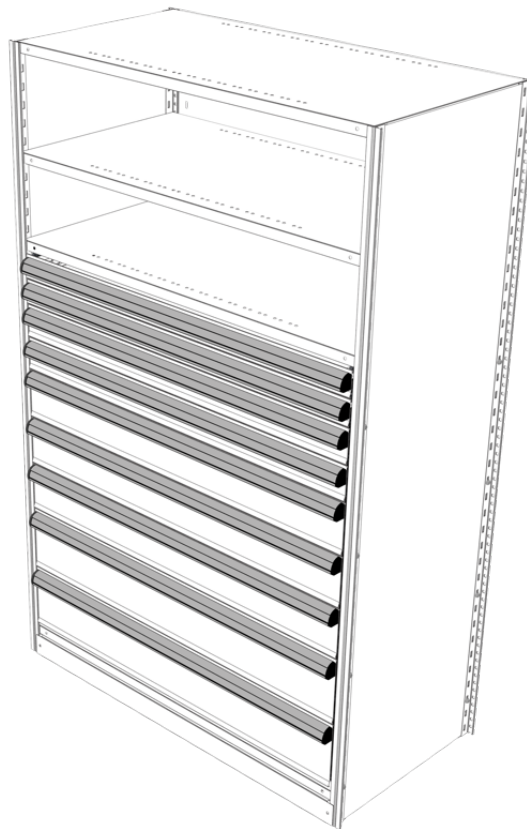


Fig. 1



Step 1

- Bolt the 4 drawer adaptors to the post using 1/4"-20UNC x 5/8" nuts & bolts
- Rear adaptors support the back panel directly (see Fig. 2)

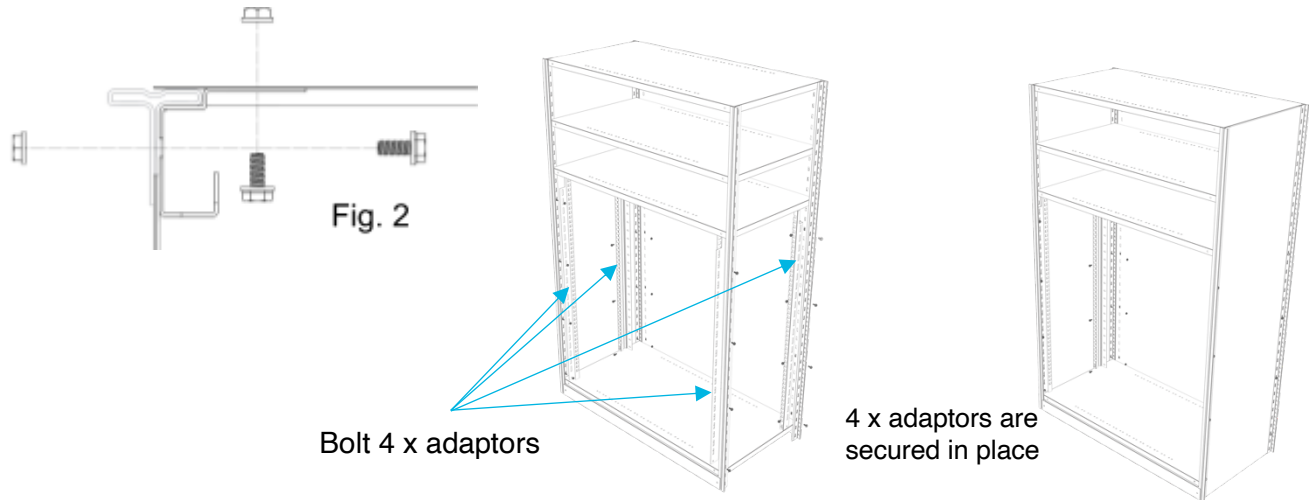
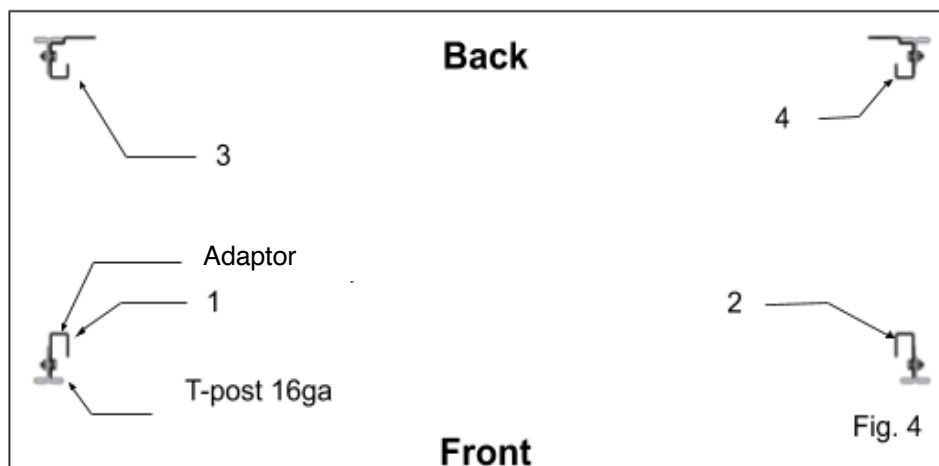


Fig. 3



- Adaptors have a laser cut number (from 1 to 4); see Fig. 3 for easy positioning
- See positioning in Fig. 4

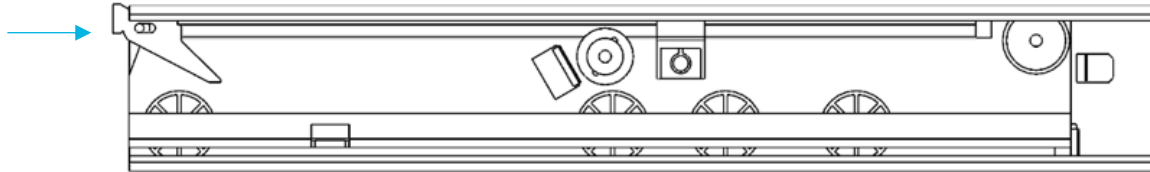




NB: Rails & Slides

- Rails and slides are shipped pre-assembled
- Rails and slides are mirrored on each side and are identified as seen below

Interior view
of left slide



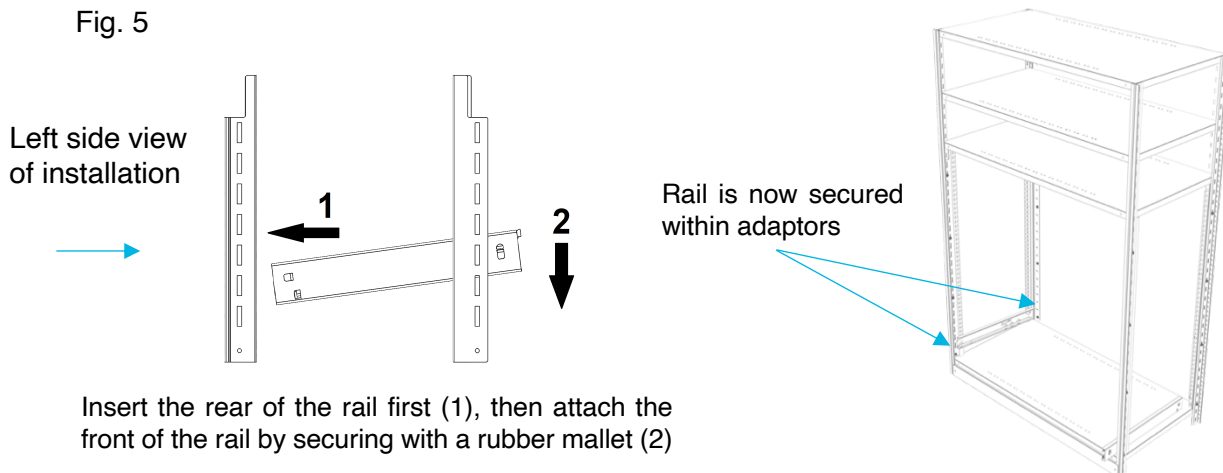
Exterior view
of left rail



Step 2

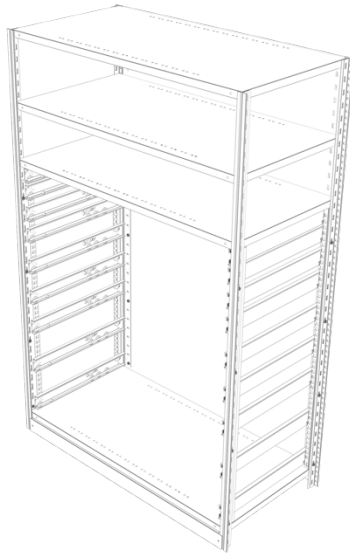
- Insert the rear of the rail in the rear adaptor slot (Fig. 5)
- Insert the front of the rail by snapping down into the front adaptor slot using a rubber mallet
- It is recommended to install all rails in their proper positions first before continuing

Fig. 5

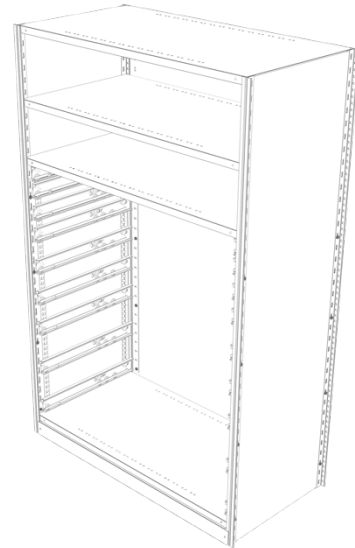




Inserted rails into adaptor brackets 1 & 3 (left side) and adaptor brackets 2 & 4 (right side)



All rails inserted, side panels and back panel are attached to close off and secure the unit



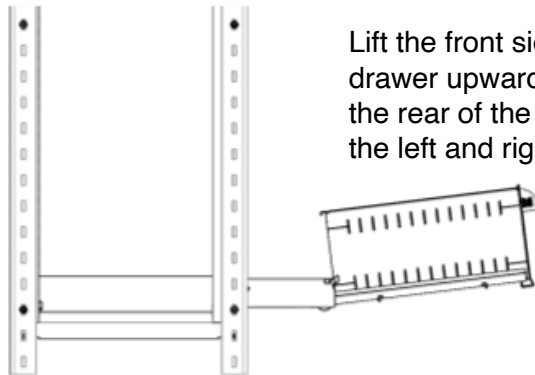
Step 3

- Insert the drawer by gently lifting the front side (Fig. 6)

Left side view of installation



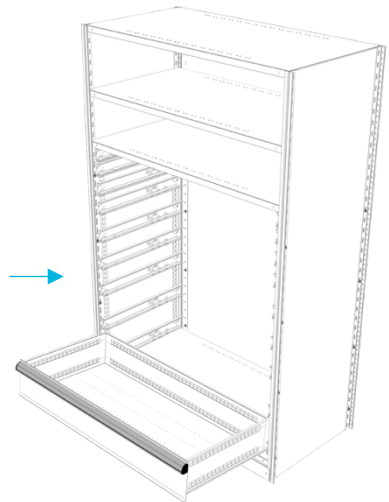
Fig. 6



Lift the front side of the drawer upwards and slide the rear of the drawer into the left and right rails



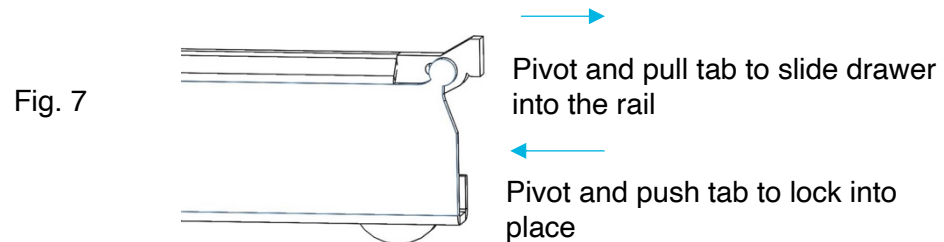
Front view of installation





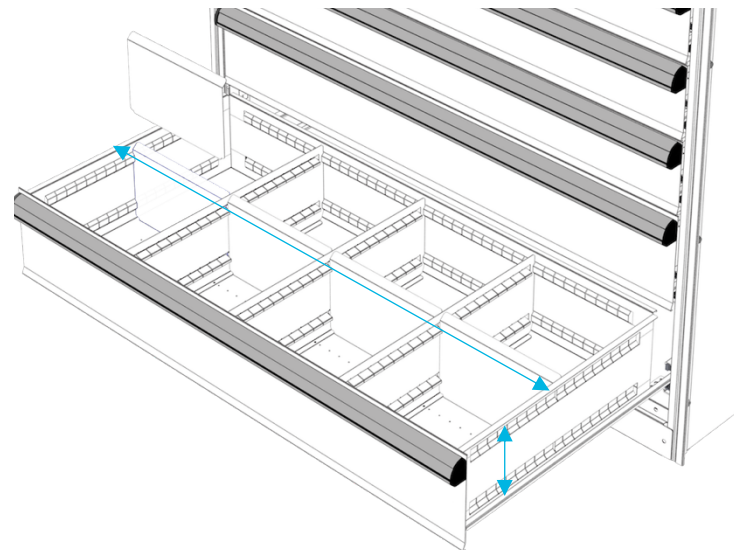
Step 4

- Pivot and push the tab into the locked position to secure the drawer in place (Fig. 7)



NB: Drawer Body

- All drawer heights (3" – 4" – 5" – 6" – 7" 8" – 10" – 12") are designed with deep compartments to avoid spillover
- Eg. An 8" drawer front provides a full 7" useable storage depth
- Every drawer is punched for maximum possible compartment configurations
- Separators are factory-installed for additional rigidity and support; they can be adjusted in 1" increments
- Appropriate-size dividers can be dropped in and configured in 1" increments



Drawer sides and dividers are flush with the top of the drawer-front

Repeat steps 3 & 4 for all remaining drawers



Sub-Assembly Component Reference Guide

Fig. 1 (below): Drawer (Product Code: DR81836_-00-0000_ : Empty box)

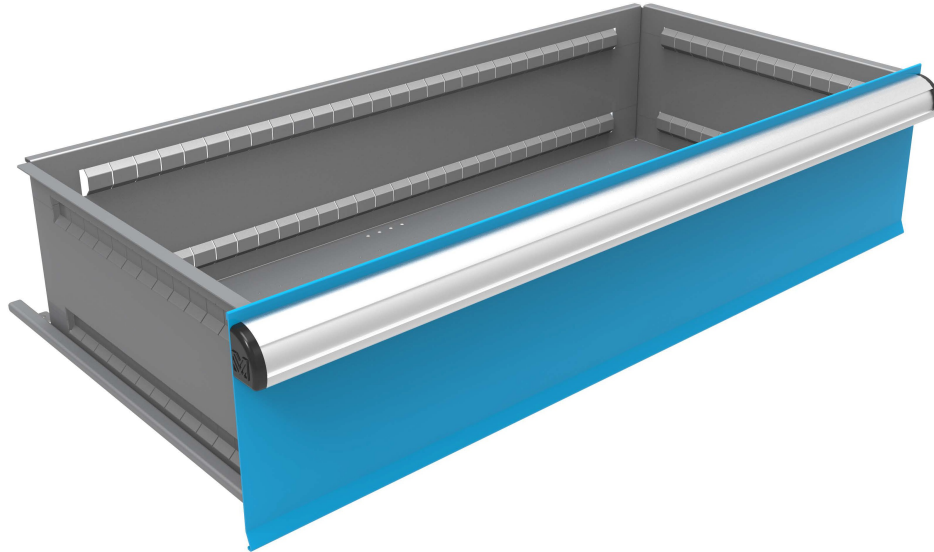


Fig. 2 (below): Drawer (Product Code: DR41848_-44-1033_ : 44 compartments)

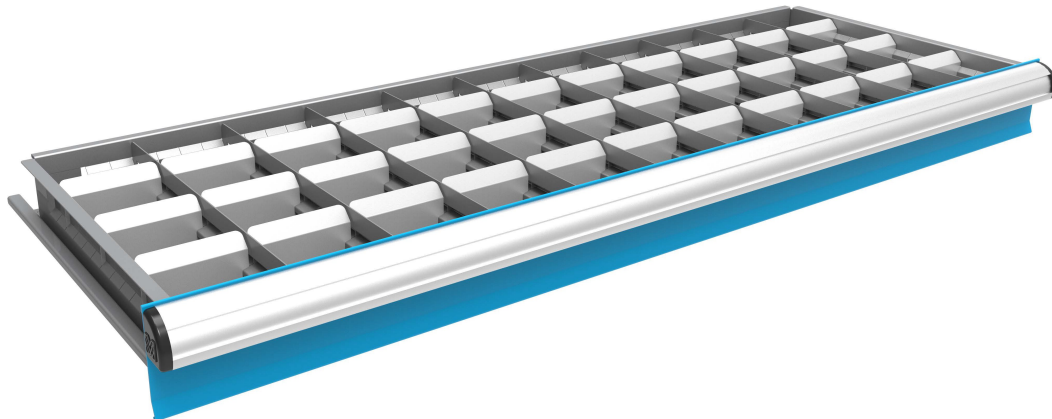




Fig. 3 (below): Drawer (Product Code: DR82448_-16-0312_ : 16 compartments)

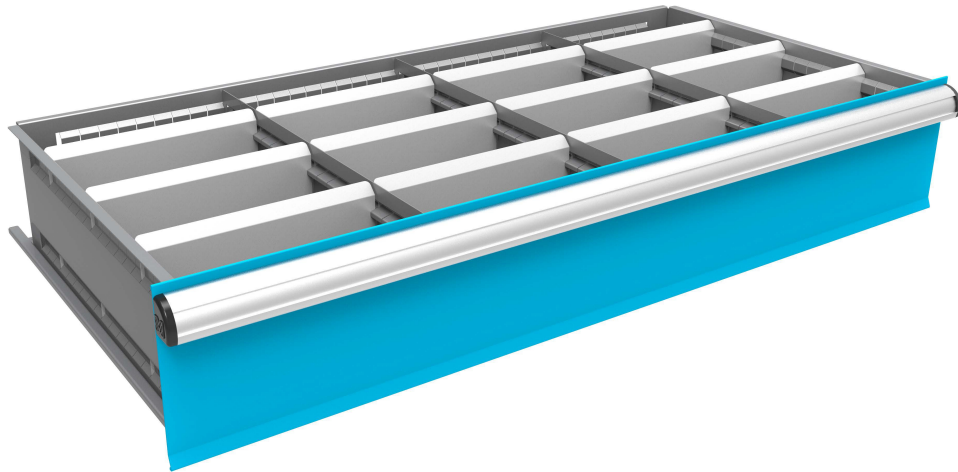


Fig. 4 (below): Interlok Drawer Adaptor Kit (Product Code: INDA_ : from 12" to 48")

NB: Drawer Adaptors

- **24"H and shorter:**
a shelf is required directly on top of the drawer "block"
- **36"H and 48"H:**
2 shelves are required; one on top and one under the drawer "block"

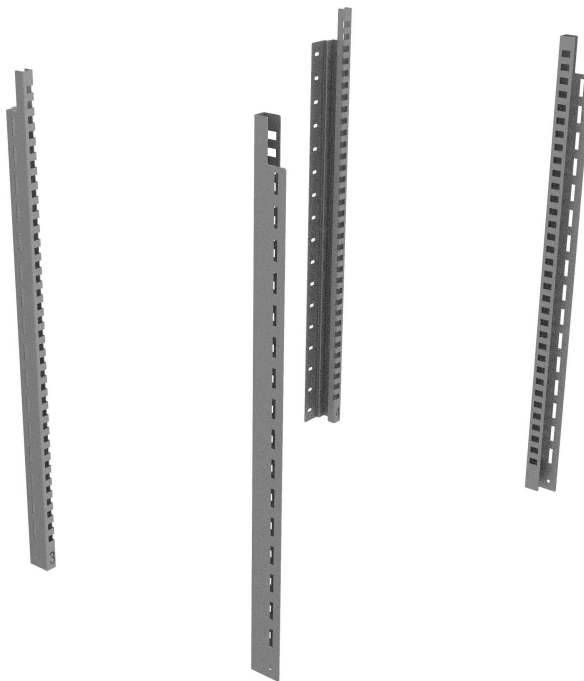




Fig. 5 (below): Separator (Product Code: DS_18 or DS_24 : 18" or 24" only)

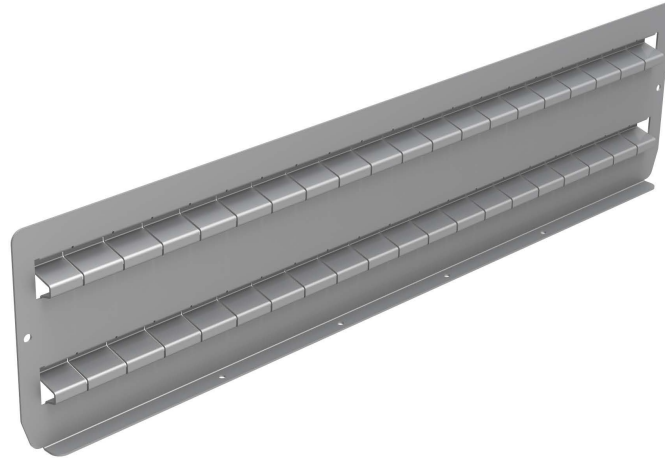


Fig. 6 (below): Divider (Product Code: DD_ : from 3" to 12")





METALWARE



METALWARE

5735 Place Turcot, Montreal, QC H4C 1V9

1-514-937-9533

1-833-937-9533

info@metalware.ca

www.metalwareshelving.com